



## Mimarlık ve Tasarım Fakültesi

İstanbul Aydın Üniversitesi Mimarlık ve Tasarım Fakültesi Tarafından

**İstanbul Aydın  
Üniversitesi**

**Prof. Dr. Mustafa  
AYDIN**  
(Mütevelli Heyet  
Başkanı)

**YAYIN KURULU**  
**Prof. Dr. İbrahim Hakkı  
AYDIN** (Rektör)

**Prof. Dr. Ufuk Fatih  
KÜÇÜKALİ**  
(Mimarlık ve Tasarım  
Fakültesi Dekan Vekili)  
**Prof. Dr. Gökçen F. YÜCEL**

**Yayına Hazırlayanlar**  
Prof. Dr. Gökçen F. YÜCEL  
Dr. Öğr. Üyesi Pınar  
TABAK  
Arş. Gör. Melahat KAYA  
KOÇ

### Yayın

Editörlüğünü Prof. Dr. Gökçen Firdevs Yücel Caymaz'ın yaptığı **EBSCO** indeksli *A+ArchDesign, International Journal Of Architecture and Design* / İstanbul Aydın Üniversitesi Mimarlık ve Tasarım Fakültesi dergisinin 2025-11/2 sayısı Aralık ayında yayımlanmıştır.



### Makale

İç Mimarlık Bölümü Öğretim Üyesi Dr. Hilal Türkođdu, Doç. Dr. Dilek Yasar ve Mimarlık ve Tasarım Fakültesi Dekanı Prof. Dr. Ufuk Fatih Küçükali'nin, "Analyzing Light-Atmosphere Patterns Across Film Genres: A Student - Perception Based Content Analysis and AI -Assisted Visual Modeling" adlı makalesi Scopus'ta indeksli "Architecture Image Studies" adlı dergide, <https://doi.org/10.62754/ais.v6i3.547> doi numarası ile yayınlanmıştır.

### Abstract

Although extensive theoretical discussions examine how interior atmospheres are constructed in cinema, particularly how lighting and illumination guide viewer perception, comprehensive empirical studies that explore how these atmospheric elements are understood and conceptualized by design students across different film genres remain limited. Addressing this gap, the present study investigates how 102 students enrolled in the Form Light Color course in the Interior Architecture Department at Istanbul Aydın University systematically analyzed interior scenes from five film genres: horror and thriller, romance, comedy, fantasy, and science fiction, focusing specifically on lighting and illumination. The research employs a multi stage methodological framework consisting of data collection, qualitative coding, thematic content analysis using MAXQDA, word cloud modelling, and artificial intelligence based visual generation through the GEMINI system. The findings reveal distinct patterns of light and atmosphere for each genre. Horror and thriller films rely on low key and shadow intensive lighting. Romance films emphasize warm and diffused illumination. Comedy films frequently use bright and evenly distributed lighting. Fantasy films highlight colorful, magical, and multidirectional illumination. Science fiction films are characterized by neon based, cold, and technologically structured lighting schemes. By bringing together student perception, qualitative analysis, and artificial intelligence supported visual modelling, this study offers a novel methodological contribution to both film studies and design education literature. The findings provide a deeper understanding of how cinematic lighting and atmosphere are constructed, interpreted, and visually represented.



Artificial intelligence scenes generated from fantasy movie scenes

### Makale

Mimarlık ve Tasarım Fakültesi Dekanı Prof. Dr. Ufuk Fatih Küçükali'nin "The New Face of Urban Transformation: Fener-Balat Example" adlı makalesi Scopus' ta indekslenen "Architecture Image Studies Scientific" adlı dergide yayınlanmıştır.

### Abstract

Cities have been subject to deterioration due to changing physical conditions, changing socio-cultural habits and economic reasons. These deteriorations can sometimes occur in the urban fabric and sometimes in all components that make up the city. Deteriorations in the city cause the areas in the city centers to deteriorate physically, lose their quality and become derelict areas. Urban transformation applications are required to prevent this situation. In this context, urban transformation applications can be explained as the restoration of deteriorated areas to the city together with the right policies in a way that is suitable for the urban fabric and meets the socio-cultural needs of the people living in the region. The purpose of this research is to examine the urban planning model applications that are compatible with the principles of new urbanism; on the neighborhood-district scale, through the example of Fener Balat District. The basic elements of the New Urbanism Movement and the second scale of the Movement are neighborhood, district and corridor. Neighborhoods are urbanized areas that are a balanced mixture of people's daily lives, districts are areas dominated by a single activity and corridors are areas that connect or separate neighborhoods and districts. The principles see these three levels as the basic elements of development. Through these levels, New Urbanism is the resolution of conflicts between traditional urbanism principles, traditional urban form and modern institutions and technological needs. This research is the examination of urban planning model applications that overlap with the basic principles of new urbanism through the example of Fener Balat, a historical and organic settlement area.



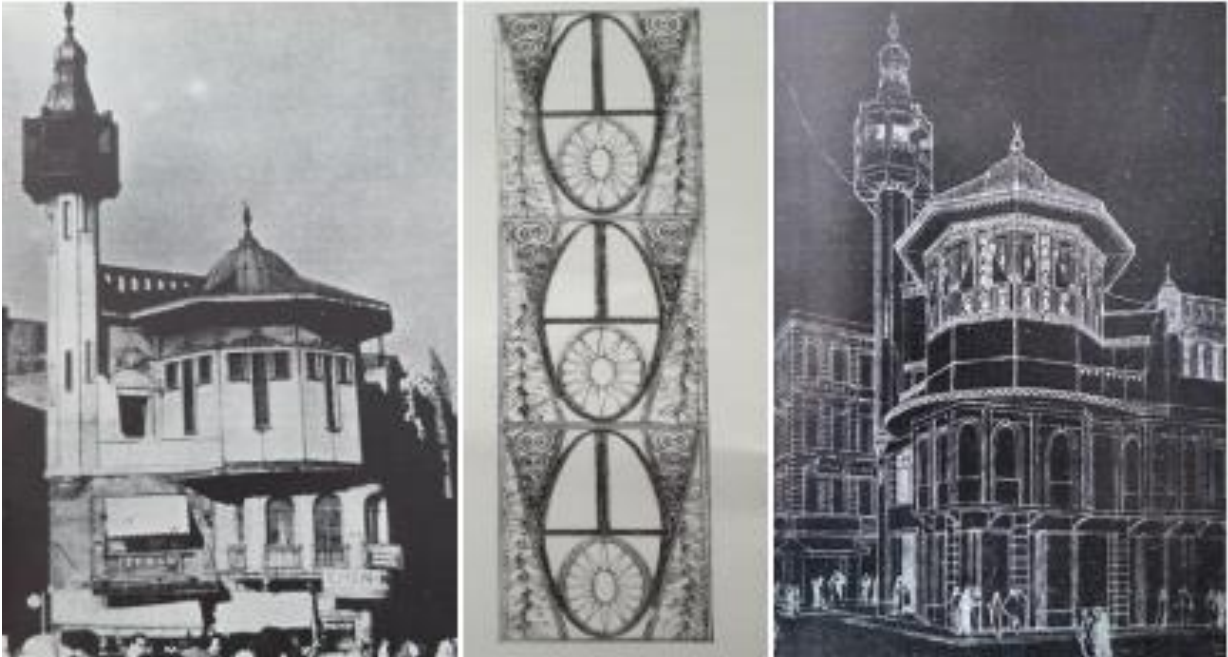
Proposed Open Space Use for Fener-Balat Coastline

### Makale

İç Mimarlık Bölümü Öğretim Üyesi Prof. Dr. Alev Eraslan'ın "Reading the Signs of Ottoman/Istanbul Art Nouveau in the Buildings of Raimondo D'Aronco" adlı makalesi Scopus'ta indekslenen "Architecture Image Studies" adlı dergide yayımlanmıştır.

### Abstract

Ottoman architecture gained a new appearance under the influence of imported architectural styles throughout the eighteenth and nineteenth centuries. With the Palace opening out to the world at large, inviting western artists to the Empire, the western understanding of architecture began to reign over Ottoman concepts as all structures were now included in a new stylistic organization through the influence of foreign architects. In particular, with the era of Sultan Abdulhamid II (1876-1909), Ottoman architecture was impacted by the force of architectural movements originating in Europe that brought Neoclassicism, Neo-baroque, Neo-gothic, Orientalism, Art Nouveau, Eclecticism, Swiss Chalet, and the English Victoria and Art Deco styles to the fore. The most influential of these movements in Ottoman society, however, was Art Nouveau. The most powerful representative of Art Nouveau in the Ottoman realm was Abdulhamid II's architect, Raimondo D'Aronco. A "Palace" architect, it was thanks to D'Aronco that the Art Nouveau style came to influence Istanbul's architectural traditions, and it was also through him that a new Ottoman/Istanbul Art Nouveau with a "local" character was born. The aim of this paper is to explore the Art Nouveau style that has held sway over Ottoman architecture since 1893 through the works of its most famous implementer, Raimondo D'Aronco, and to define the characteristics of the Ottoman/Istanbul Art Nouveau that made his designs so notable. Toward this aim, some of the architect's works have been selected and analyzed as to plan, construction system and decorative element



Right: Drawing of Karaköy Mosque at the Udine Museum (Nicoletti 1982, Fig. 187). Center: Architect's drawing of the mosque's facade decoration (Barillari 2010, 244, 248). Left: The implemented structure (Nicoletti 1982, Fig. 184).

### Makale

İç Mimarlık Bölümü Öğretim Üyesi Dr. Ezgi Yılmaz ve Öğretim Görevlisi Elif Sözer'in "VR-Based Neurophysiological Measurement Analysis and AI-Supported Design Integration in Biophilic Hospital Interiors: Neuroarchitectural Method Proposal" adlı makalesi Scopus'ta indekslenen "Architecture Image Studies" adlı dergide yayımlanmıştır.

### Abstract

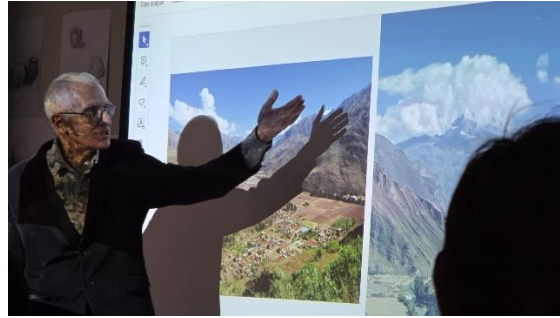
Future healthcare structures will be intelligent spaces that adapt not only to aesthetic, technical, and functional aspects but also to measurable responses from the human brain and body, thereby contributing to recovery processes. The aim of this study is to establish a methodological basis for an evidence-based optimisation approach and design guide using artificial intelligence technology. This involves evaluating user responses through simultaneous neurophysiological measurements while experiencing the interior components of hospital rooms designed with biophilic parameters within a neuroarchitectural framework in a VR environment. To achieve this goal, inpatient rooms were scenario-based in a virtual environment with different biophilic elements, and the neurophysiological methods/techniques used during the user's VR experience were comparatively analysed within the framework of predefined accessibility, VR compatibility, data sensitivity, ethical compliance, and cost criteria. Subsequently, the framework for an artificial intelligence-based evaluation/recommendation approach was defined by considering the selected measurement set and biophilic design parameters together. The findings indicate that the most functional set of measurements in terms of applicability, portability, and data meaningfulness, capable of reliably capturing stress/mood/cognitive load indicators while working synchronously with VR, is Electroencephalography (EEG), Heart Rate Variability (HRV), and Galvanic Skin Response (GSR). These results demonstrate that biophilic design decisions can be optimised using artificial intelligence technology based on measurable neurophysiological responses. This study is unique in that it proposes a holistic approach to biophilic hospital rooms through VR-based neurophysiological data collection and AI-supported design optimisation, and provides a systematic framework that can transform this approach into an evidence-based design guide, thereby making significant contributions to both the literature and practice

Evaluation of neurophysiological measurement methods (Prepared by the author.)

Measurement Method	Accessibility and Infrastructure	VR Integration	Data Quality and Sensitivity to Target Processes	Participant Comfort-Ethics	Cost
EEG	It is relatively common in research laboratories; portable systems may be available.	Compatible with mobile wireless EEG systems that can be used with VR headsets.	High temporal resolution; sensitive to attention, cognitive load and affective changes.	Non-invasive; participant comfort can be managed with appropriate mounting.	Medium-high; however, it is sustainable with the existing infrastructure in many institutions.
HRV	Relatively common in research laboratories; portable systems may be available.	It can be used freely during the VR experience; it does not interfere with the head area.	Stress relief is sensitive to the balance of the autonomic nervous system and the capacity for recovery.	Non-invasive and comfortable; generally well tolerated even in clinical patient groups.	Economical for short, medium and long-term studies.

### Etkinlik / Sunum

Mimarlık Bölümü Öğretim Üyesi Prof. Dr. Murat Soygeniş, Mimarlık ve Tasarım Fakültesi Seminerleri Dizisi kapsamında “Peru’ndan İzlenimler” başlıklı bir sunum gerçekleştirmiştir.





### Hakemlik

Mimarlık ve Tasarım Fakültesi Dekan Prof. Dr. Ufuk Fatih Küçükali, WOS Q1’de indekslenen “Springer Nature: Scientific Reports” dergisinde iki hakemlik yapmıştır.

İç Mimarlık Bölümü Öğretim Üyesi Prof. Dr. Alev Eraslan, ESCI’da indekslenen “Journal of Cultural Heritage Management and Sustainable Development” dergisinde “Rural Heritage and Sustainability -A case of Thirukodikaval” başlıklı makaleye hakemlik yapmıştır.

İç Mimarlık Bölümü Öğretim Üyesi Doç. Dr. Dilek Yaşar, WOS Q2’de indekslenen “Clean Technologies and Environmental Policy” dergisinde bir makaleye hakemlik yapmıştır.

Mimarlık Bölümü Öğretim Üyesi Dr. Fatma Sedes, “Akademik Tarih ve Düşünce Dergisi”nde “Osmanlı’dan Cumhuriyet’e Bursa–Mudanya Demiryolu Hattı: Endüstri Mirası, Mekânsal Dönüşüm ve Koruma Sorunları” başlıklı makaleye hakemlik yapmıştır.

### Editörlük

Mimarlık Bölümü Öğretim Üyesi Dr. Süleyman Balyemez, kurucu editörleri arasında yer aldığı ve halen yayın kurulu üyeliğine devam ettiği WOS’ta indekslenen “Planlama” dergisinin 2025/3 sayısını yayımlamıştır.

İç Mimarlık Bölümü Öğretim Üyesi Doç. Dr. Dilek Yaşar, WOS Q1’de indekslenen “SAGE Open”da “Sustainable Development Goals through Revolutionizing Solid Waste Management Behaviour among Indian Youths: The Role of Locality Attachment, Environmental Knowledge and Moral Obligation” başlıklı makale için makale editörlüğü yapmıştır.

### Proje Başvurusu

İç Mimarlık Bölümü Öğretim Üyesi Dr. Hilal Türkdöğdu, araştırmacı/uzman olarak, Yıldız Teknik Üniversitesi ve İstanbul Üniversitesi öğretim üyelerinin yer aldığı bir TÜBİTAK 1002 Proje başvurusunda bulunmuştur.

### Jüri Katılımı

Mimarlık Bölümü Öğretim Üyesi Dr. Fatma Sedes tez yürütücüsü ve Mimarlık Bölümü Öğretim Üyesi Prof. Dr. Ayşe Sirel ve İç Mimarlık Bölümü Öğretim Üyesi Dr. Ezgi Yılmaz misafir jüri üyeleri olarak Yüksek Mimar Elif Sözer’in Doktora Yeterlilik Jurisinde yer almıştır.



### Uluslararası İlişkiler



### MİMARLIK VE TASARIM FAKÜLTESİ



Turin Polytechnic University in Tashkent Civil Engineering and Architecture bölümünden Öğretim Görevlisi (MSc. Teacher) Sanjar ANVAROV, Üniversitemiz Öğr. Üyesi Dr. Fatma SEDES'i ziyaret ederek bölüm ve tarihi eserlerin deprem afetine karşı koruma önlemleri ve projelerine dair bilgi almıştır.



### Kurum içi çalışmalar



### MİMARLIK VE TASARIM FAKÜLTESİ



Endüstriyel Tasarım Bölümü Öğretim Üyelerinden Dr. Şeniz ATİK ve Mimarlık Bölümü Öğretim Üyelerinden Dr. Fatma SEDES İAÜ II. Araştırma Ekosistemi ve Bilimsel Üretkenlik Geliştirme Çalıştayı kapsamında Masa 18 olarak yaptıkları çalışma sonuçlarını Oval Ofiste görseller eşliğinde sunmuşlardır. Proje olarak seçilen öneri: Kültürel Miras başlıklı Cam Tarihi ve Teknolojisi: Antik Formlara Çağdaş Yaklaşımlar Cam Tarihinin Temsili'dir.

