

Linköping University

Linköping University



A public non profit university
Founded 1975

27,000 students –
2,000 international



High in international rankings

- QS: place 283
- QS Top 50 under 50: place 26
- Shanghai list: place 308
- Times Higher Education: place 360

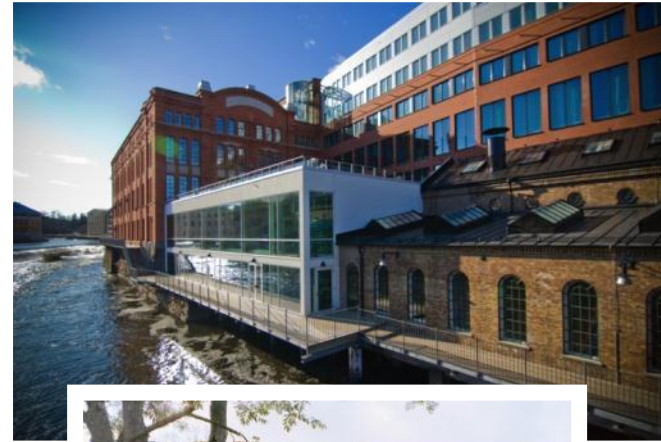


Location

- 1.5 h from Stockholm
- Direct flights from Copenhagen and Amsterdam
- Key cities: Linköping and Norrköping



Campus Valla,
Linköping,
19,000 students



Campus Norrköping,
5,500 students



Campus US (University Hospital), Linköping,
3,000 students



Malmstens, Stockholm,
70 students

An international university

- Students from 80 different countries
- 51% of all scientific papers internationally co-authored
- Student exchange with 500 universities in 50 countries





Partner universities in Turkey

Ankara Üniversitesi

Balıkesir Üniversitesi

Bogaziçi Üniversitesi

İnönü Üniversitesi

İstanbul Teknik Üniversitesi (İTÜ)

İzmir Yüksek Teknoloji Enstitüsü

Koç Üniversitesi

Öndokuz Mayıs Üniversitesi

Orta Dogu Teknik Üniversitesi

Suleyman Demirel Üniversitesi

Zirve Üniversitesi



International master's programmes



400 international degree students

24 English taught Master's programmes

- Engineering & Computer Science
- Aeronautics
- Data Mining
- Environmental Studies
- Education Sciences
- Medical Biosciences
- Nanotechnology
- International Relations
- Business Administration
- Ethnic and Migration Studies

Why Linköping University – Education and Research!



- Open climate with a strong focus on team work
- Interdisciplinarity and cooperation across subject and faculty boundaries
- Laboratories – hands-on learning



Why Linköping University



- Guaranteed accommodation for fee paying students
- International student associations
- Welcome activities & vibrant student life



Career opportunities



- Science parks – LiU alumni
- Ericsson, IFS, Saab
- Aerospace industry
- Academic career



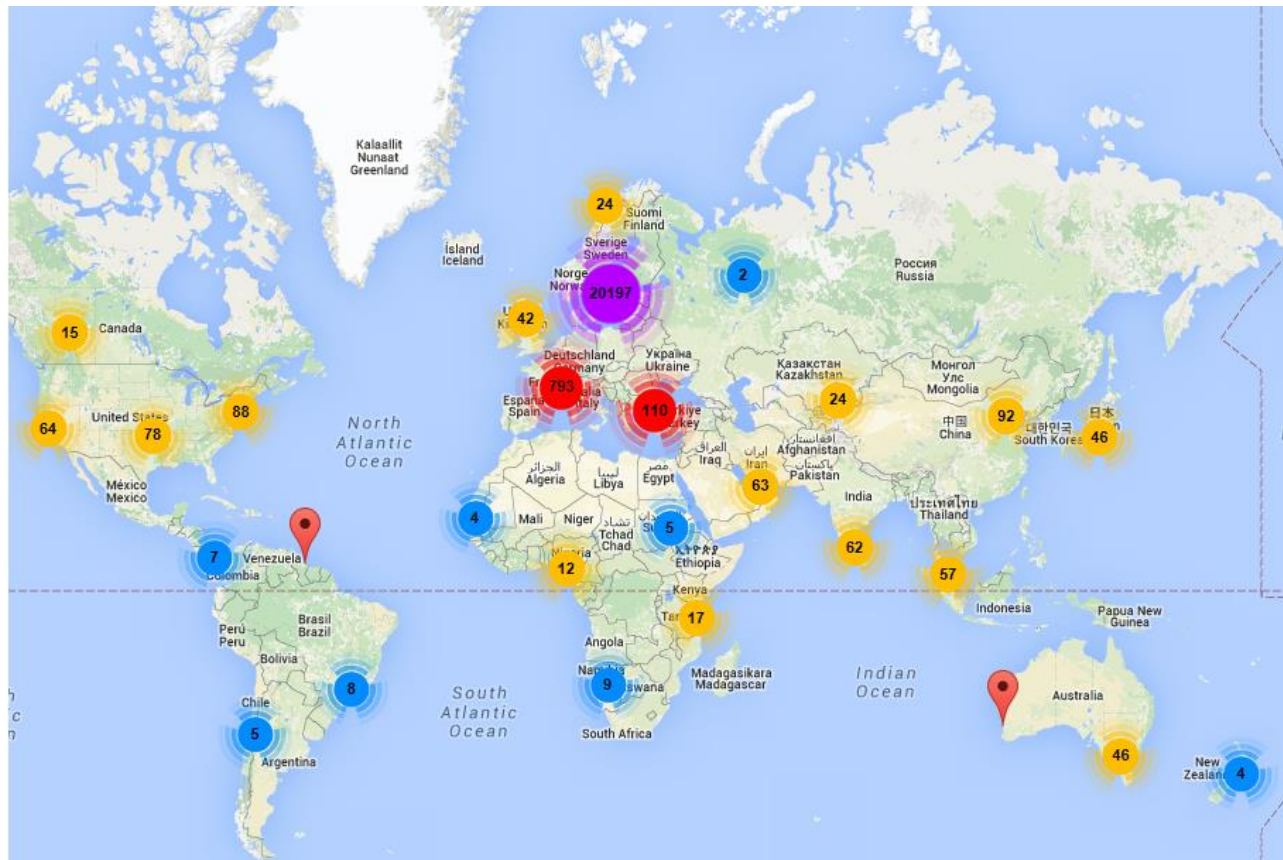
One out of two international students recommend LiU



One out of two international students would actively recommend LiU as a university, according to the online benchmark survey International Student Barometer, ISB, 2014.

Social life, campus and its surroundings, eco-friendly attitude, recycling, free campus bus, bikes...

LiU alumni found all over the world



Notable alumni



Peter Agnefjäll,
President and
CEO, Ikea Group



Elnaz Baghlanian,
Coordinator,
Svenska Pen

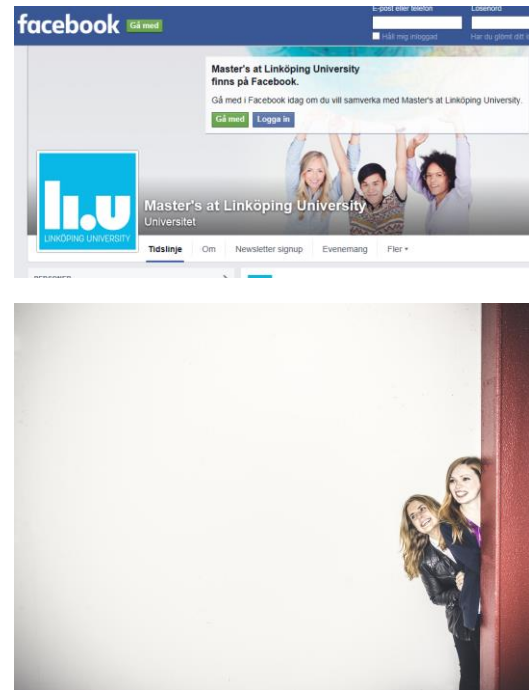
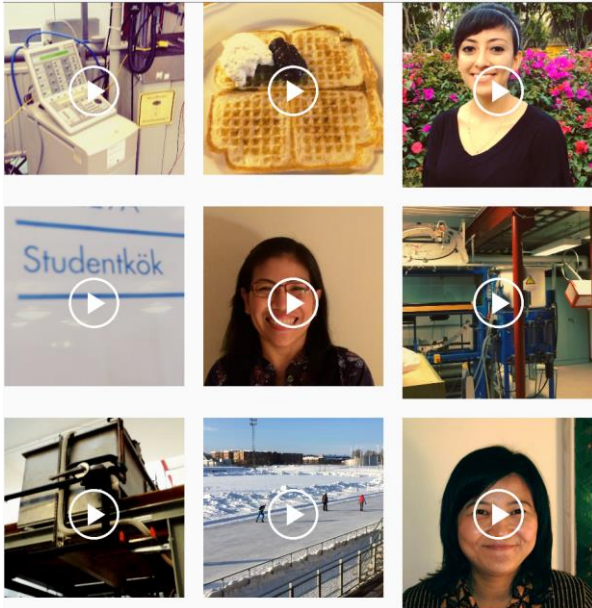


Helena Norrman,
Senior Vice
President
Marketing and
Communications
Ericsson



Carl-Henric
Svanberg,
Chairman,
BP and Volvo

Keeping in touch



studyinfo@liu.se

facebook.com/mastersatliu

instagram.com/linkoping_university_master