

**İSTANBUL AYDIN UNIVERSITY**  
**GRADING & EVALUATION SYSTEM REGULATION**

**1) Aim**

\*To integrate into the grading & evaluation system being used in Turkey and throughout the world. To build a grading & evaluation system equal to the commonly used systems of developed countries such as ACT, CEEB, GRE, SAT, etc.

\*To develop a compatible grading & evaluation system in order to do accreditation with European Union and developed countries and cooperate with universities abroad.

**2) Basis**

This regulation is based on İstanbul Aydın University Regulation on Education and Exam Procedures in Associate and Bachelor's Degree Programs.

**3) Application**

This regulation is applied on all the students studying in İstanbul Aydın University.

**4) Relative Evaluation Software (İAÜBDY)**

Within the İstanbul Aydın University Grading&Evaluation system İstanbul Aydın “University Relative Evaluation Software”- which was prepared by the IT specialists of the university- will be used.

**5) Midterms and Final Exams**

a) Midterms consist of the academic activities such as midterm, project, homework, etc.

Midterms are evaluated over 100. The evaluation of the midterm activities is contributed to %40 in success grade.

b) Final exams or projects (instead of final exams) consist of homework and similar academic activities. The evaluation of the final exams is contributed to 60% in success grade.

**6. The Calculation of Raw Success Score**

The Raw Success Score is calculated through absolute evaluation considering midterm and final exam scores:

Raw Success Score = Midterm Score x 0,40 + Final Score x 0,60

**For example:**

a) If the student takes midterm and final and get 50 from midterm and 60 from final:

This student Raw Success Score;

Raw Success Score=50x0,40+60x0,60=56

- b) If the student takes midterm and final exams, do homework and project, get 45 from midterm, 80 from homework, 70 from project and 65 from final; this student's Raw Success Score:

	Midterm	Homework	Project	Final Exam
Contribution to activity	20%	10%	10%	60%
Score Obtained	45	80	70	65

$$\text{Raw Success Score} = 45 \times 0,20 + 80 \times 0,10 + 70 \times 0,10 + 65 \times 0,60 = 63$$

The project, homework, similar activities contribution percentage must be announced in the beginning of the semester by the course instructor.

## 7. Raw Success Score Average Exceptions

- NA is given to the students who can't fulfill the conditions related to attendance. Students having NA grade is excluded from the system and their grades are not evaluated while Raw Success Score is being calculated.
- FF is given to the students who don't take final exams. Students having FF grade is excluded from the system and their grades are not evaluated while Raw Success Score is being calculated.
- FF is given the student whose raw success score is below 30. These students' raw success scores are taken into consideration in class average calculation.
- Students who take 30 over 100, are given FF no matter what their raw success scores are. These students' raw success scores are taken into consideration in class average calculation.
- Class average is calculated as shown below:

$$\text{Class Average (Raw Success Score Average)} = \frac{\text{Raw Success Scores Sum of Participated Students}}{\text{Participated Students number}}$$

## 8. Calculation of Relative Scores

- When the class average is 70 and over, students' raw success grade equivalent letter, grade is calculated based on İstanbul Aydın University Regulation on Education and Exam Procedures in Associate and Bachelor's Degree Programs article 25/a Table-1.

- b) When the class average is below 70 students' raw success grade equivalent letter grade is calculated based on İstanbul Aydın University Regulation on Education and Exam Procedures in Associate and Bachelor's Degree Programs article 25/a Table-1 by using new success score (YBN) calculated by the formula below for each student.

$$YBN^* = \frac{1}{2} \cdot \left( \frac{70}{SO^*} + 1 \right) \cdot HBN$$

SO= Class Average

#### 9. Calculation of Letter Success Score of the Students who Take Excuse Exam, Single Course and Score Increasing Exams for Graduation

- a) Calculation of the letter score of the students who came to the stage of graduation and given right to take single course or score increasing and excuse exam instead of final will be given Letter Success Score based on score scale in İstanbul Aydın University Regulation on Education and Exam Procedures in Associate and Bachelor's Degree Programs article 25/a. Letter Success Note of the students who take excuse exam instead of final cannot be more than BB.
- b) Letter grades and their equivalents out of 100 points are shown below:

**Table-1**

Point	Midterm grade	Coefficient;
90-100	AA	4.0
85-89	BA	3.5
80-84	BB	3.0
75-79	CB	2.5
70-74	CC	2.0
60-69	DC	1.5
50-59	DD	1.0
40-49	FD	0.5
00-39 and below	FF	0

The objection to the success scores announced are evaluated based on terms of İstanbul Aydın University Regulation on Education and Exam Procedures in Associate and Bachelor's Degree Programs. If the raw success score changes, letter success score of the student objecting is determined by comparing Raw Success Score of related course, not over new raw success score, and the related instructor inform head of the department about this change. Head of department must inform Dean about the issue in written form. Dean of faculty inform Students Affairs Office about the situation in written form. Students Affairs Office records the change as Letter Score into AYSIS.

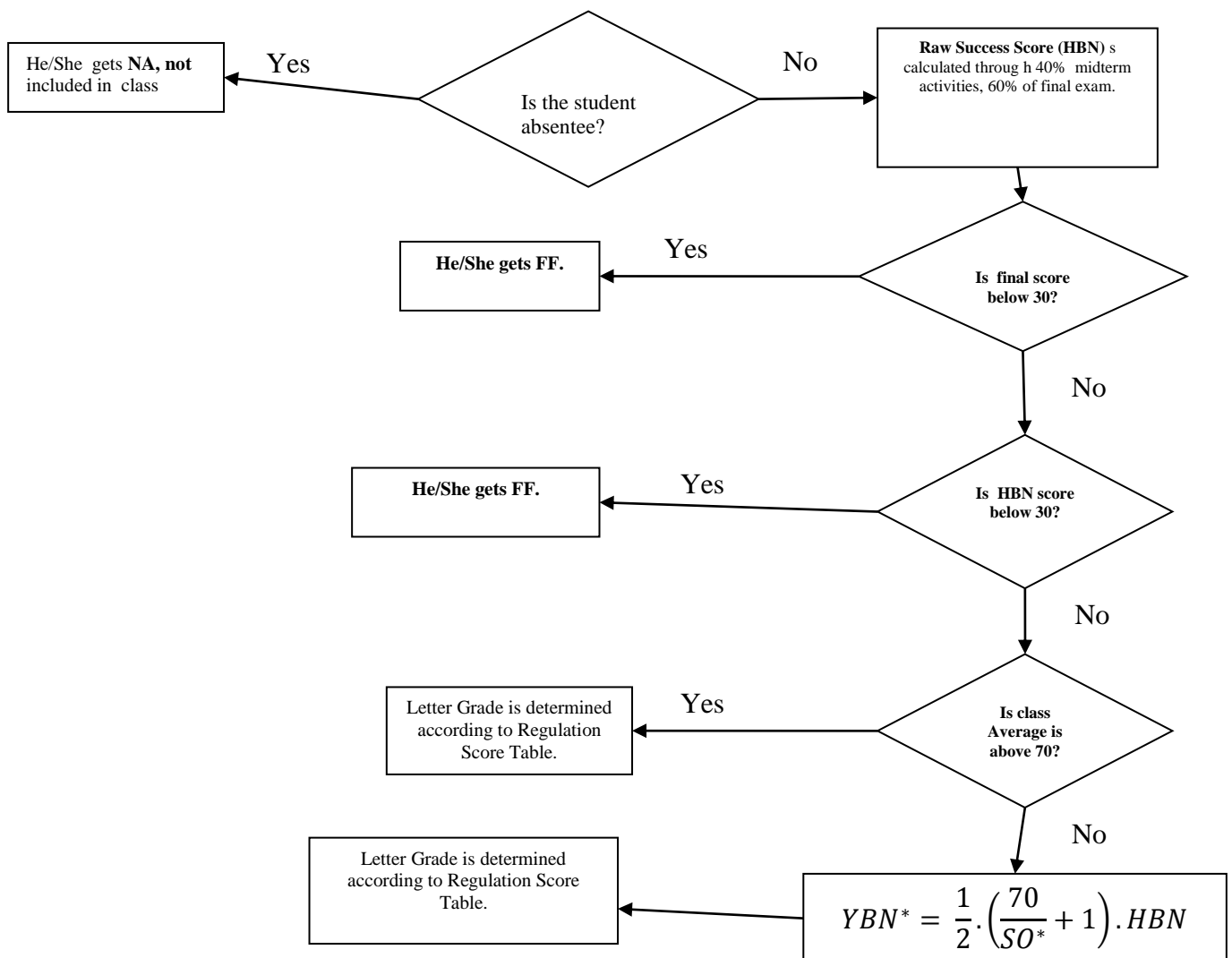
#### 10. Calculation of the Common Courses Scores

- a) Each of the instructor's classes ( at the same sections) are regarded as single class and the average of the common courses determined in this way. Raw Success Score and Letter Success Score are calculated according to this method.

- b) If the students' number is high and the course is divided into two and more groups and the same instructor is giving lecture to these groups, the instructor calculate the raw success score and letter success score by combining all these groups. If the instructor is different, each instructor's class' or group's the raw success score and letter success score are determined in itself.

**For example:** There are 4 groups in first grade daytime education Child Development Program. Within these groups Class A belongs to one instructor, and other Class B, C, D belong another instructor. Raw success score and letter success score of A are calculated within itself, however these scores are calculated together for classes B, C, D.

### 11) İstanbul Aydın University Relative Evaluation System Flow Chart



<b>Success Score</b>	0-39	40-49	50-59	60-69	70-74	75-79	80-84	85-89	90-100
<b>Letter Grade</b>	FF	FD	DD	DC	CC	CB	BB	BA	AA
<b>Coefficient</b>	0	0,5	1,0	1,5	2,0	2,5	3,0	3,5	4,0

SO (Class Average):  $\frac{\Sigma HBN}{\text{student number participated in average}}$

YBN (New Success Score) : It is calculated when the student's raw success grade is over

NA (Grade given to absentees)

HBN (Letter Success Score)